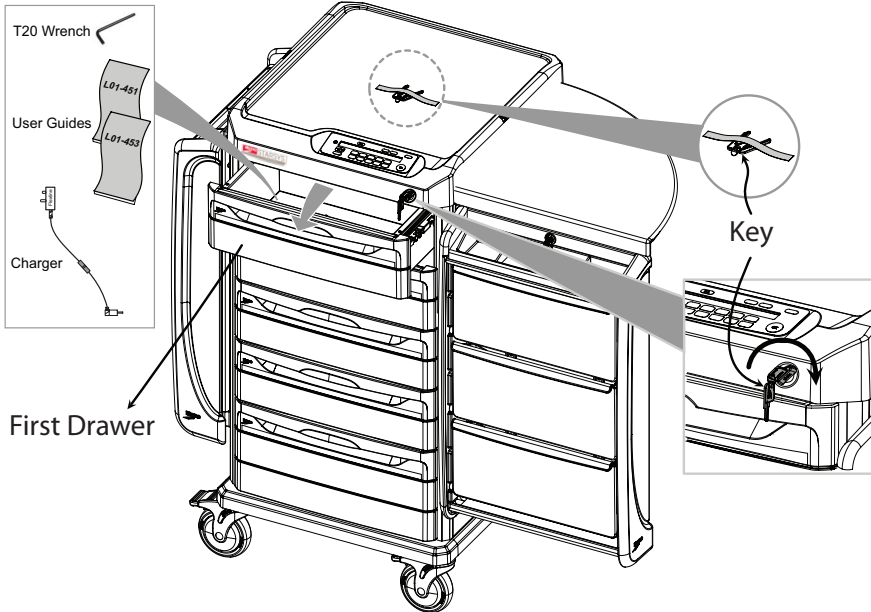
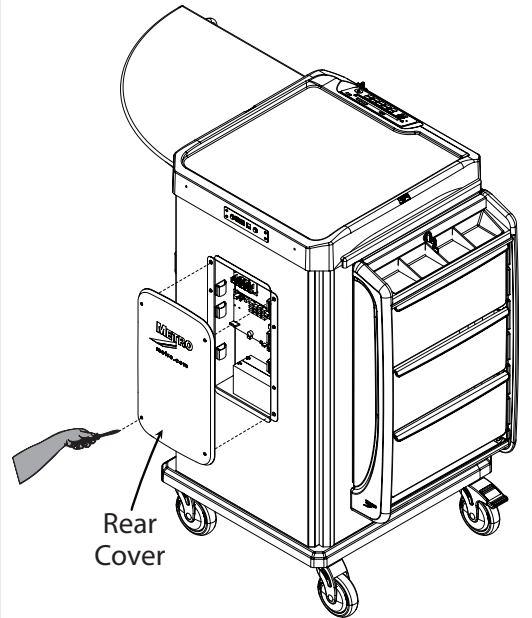


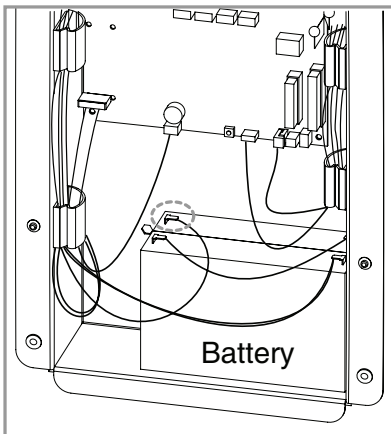
**1** To unlock the cart, insert the key into the mechanical key lock and turn clockwise.



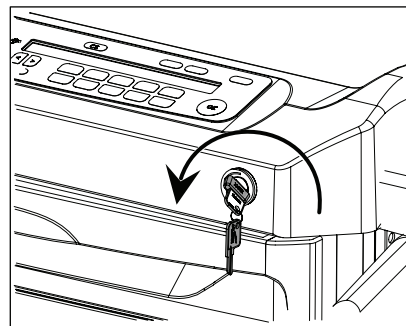
**2** Open rear cover using T20 Wrench



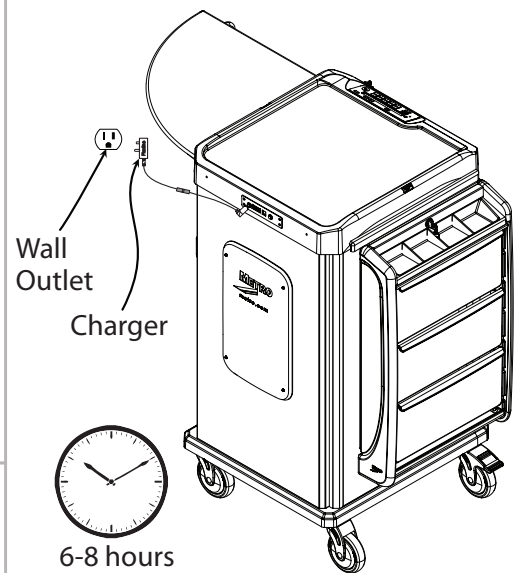
**3** Connect harnesses and jumpers of battery and assemble rear cover to cart



**4** To lock the cart, insert the key into the mechanical key lock and turn counterclockwise



**5** Plug cart into the wall outlet with charger. Enter default user code and press OK. (Default codes on page 1 of L01-453)



**Note:**

- For best security, you can add/delete/edit user codes by following the instructions "Full Feature Touch Pad Operation Guide" L01-451 (or reference L01-453 Section 6)
- See L01-453 for any additional information.